

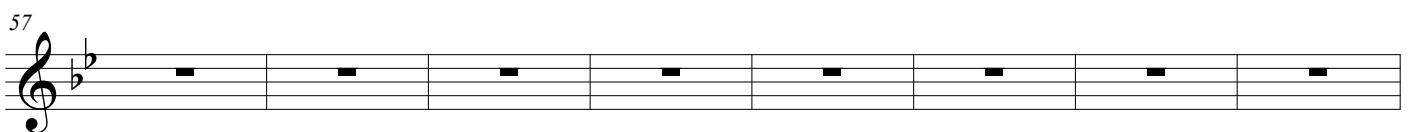
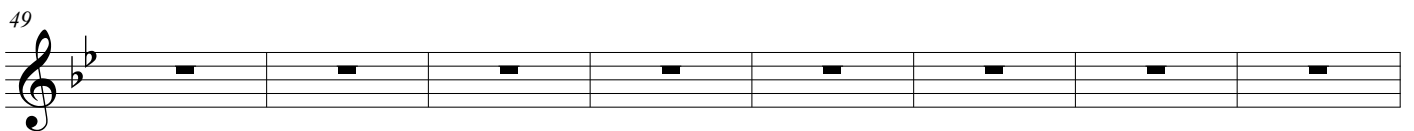
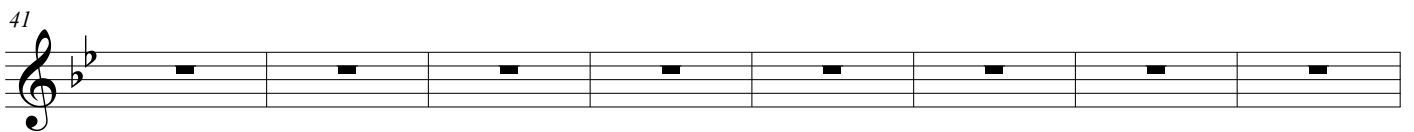
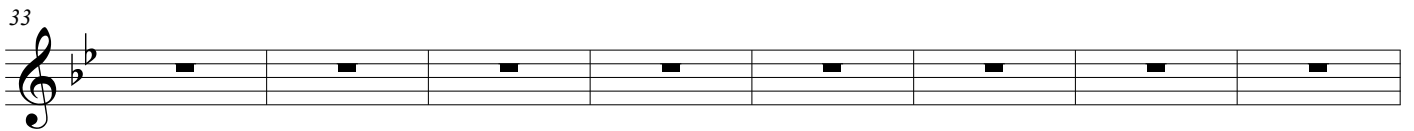
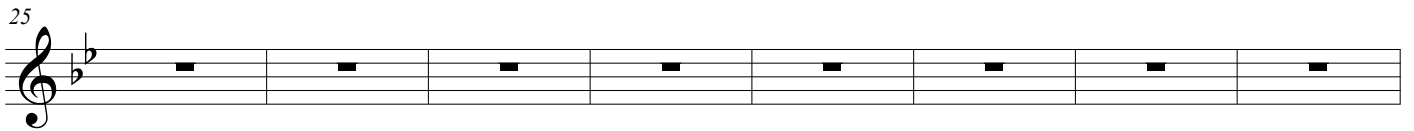
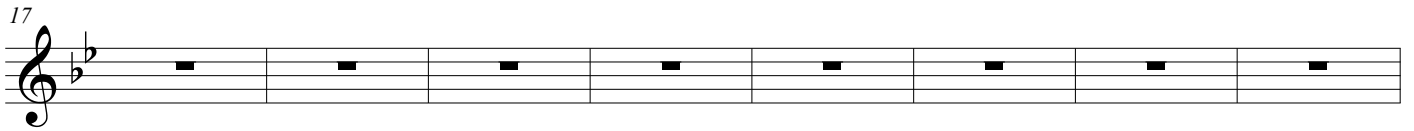
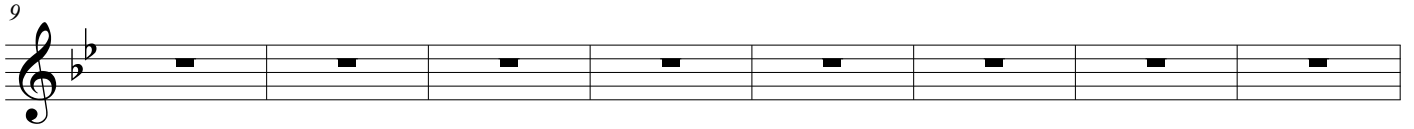
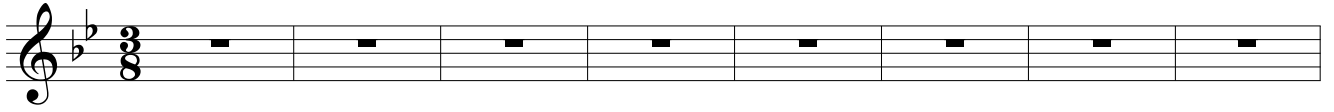
Brindisi

Voice

Da La Traviata

Giuseppe Verdi
Arrangiamento per il gioco di ruolo

♩. = 69 *Flora, il Barone, Coro misto*



65 *f* *pp* *f*

Ah! _____ li - biam, a - mor fra' _____ ca - li - ci più

74 *pp*

cal - di _____ ba - ci _____ a - vrà.

82

90

98

106

114 *mf*

Ah,

123 *pp*

— go - dia - mo, - go - dia - mo - la taz - zaeil can - ti - co la not - te ab - bel - la - il —

132 *mf* *pp*

ri - so, in que - sto, in que - sto pa - ra - di - so ne sco - pra - il —

141

nuo-vo - di. - - - - -

150

- - - - -

158

- - *pp* Ah sì go - dia-mo, go - dia-mo, go - dia-mo la taz-za eil - can-ti - co

166

la not-teab - bel-la eil ri-so go - dia-mo, go - dia-mo, go - dia-mo in que - sto pa - ra - di-so ne

175

sco-pre, ne - sco-pra il nuo - vo di, *cresc.* ne sco - prail - nuo - voil nuo - vo di, ne sco - prail

184

nuo - voil nuo - vo *f* di, sì ne sco-pra, ne sco-pra il nuo - vo *ff* di _____